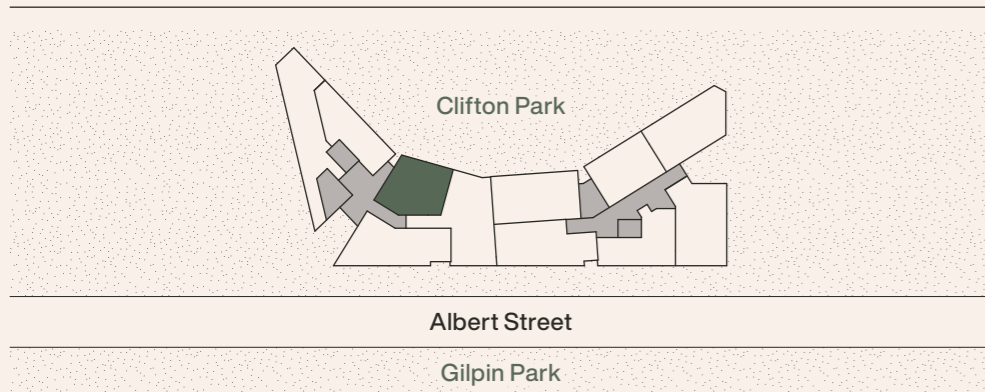
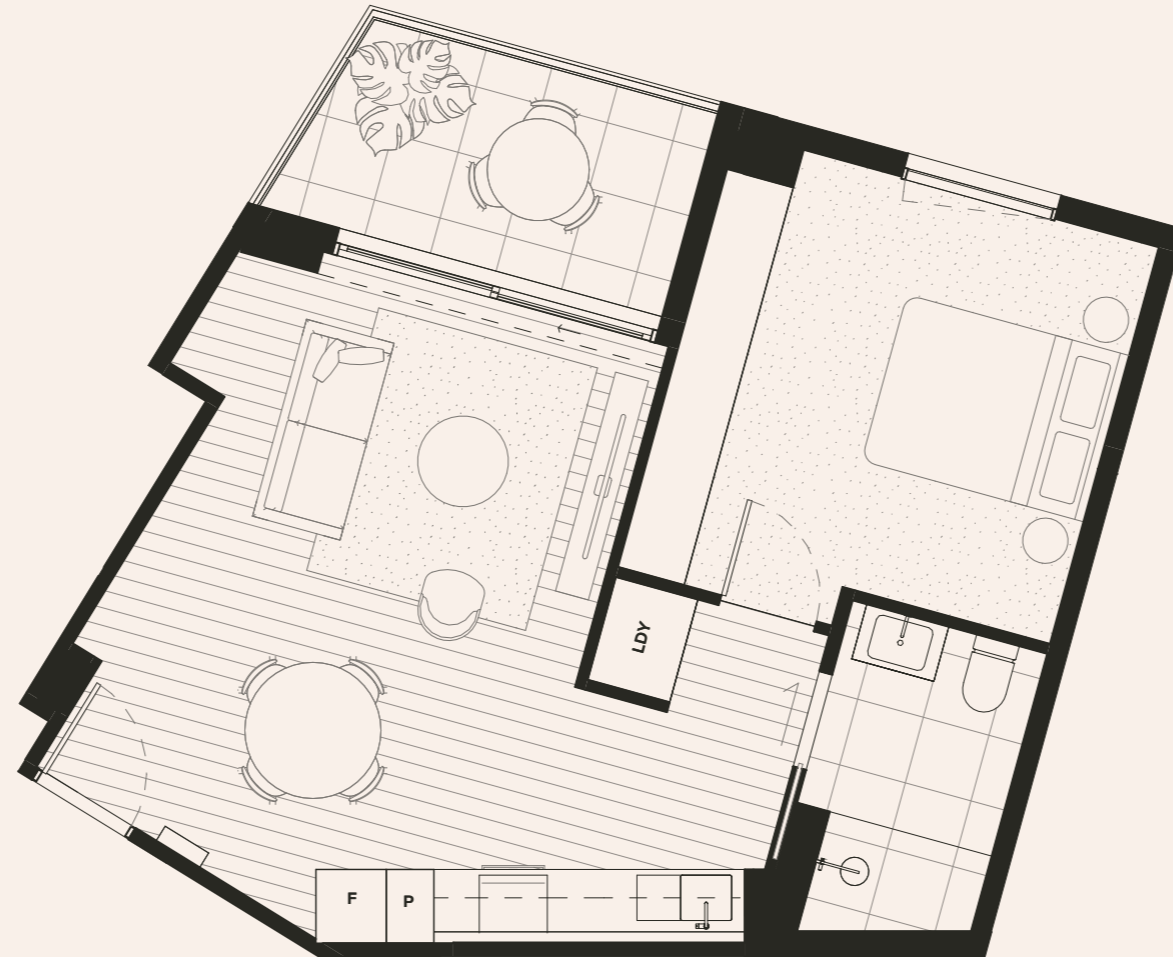
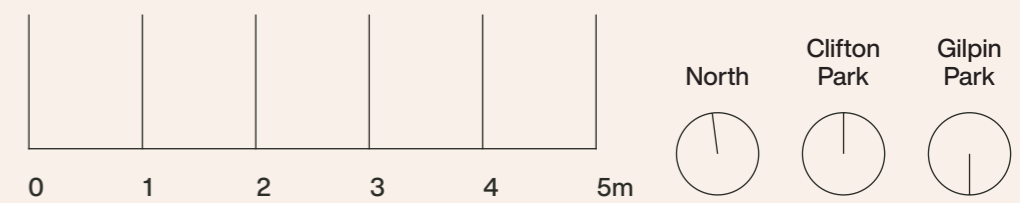


# ParkLife 2 Apartment W103



Type:	3	Bedrooms:	1	Internal Area:	53.9m <sup>2</sup>
Level:	1	Bathrooms:	1	Terrace Area:	6.9m <sup>2</sup>
Wing:	West	Bike Spaces:	1	Total Area:	60.8m <sup>2</sup>
		Storage Unit:	1		

Fridge:	F	Pantry:	P	Laundry:	LDY
---------	---	---------	---	----------	-----



Transparent Disclosure: Floor plans are for marketing and illustrative purposes and should be used as a guide only. Whilst every effort has been made to ensure the accuracy of the floor plan, changes may be made during the procurement process and dimensions, fixtures, fittings, finishes and specifications are subject to change without notice. Loose furniture and fittings are not included and are for illustrative purposes only. Measurements incorporated in floor plans have been rounded to the nearest decimal point and are based on the Property Council of Australia Method of Measurement for Residential Property. © COPYRIGHT HIP V. HYPE GROUP PTY LTD 2025